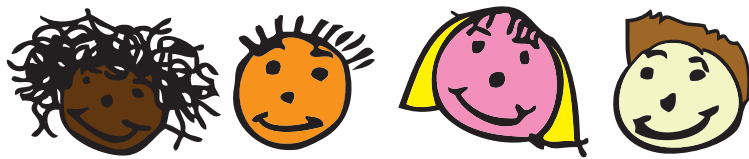


WELCOME TO

# Bowes Primary School



Bowes Primary is a *wonderful* school where we all work hard and learning is fun. We are part of The Connect Education Trust.









# *Education with* Bowes Primary School

*Our staff and children love to come to school and learn together. Our ethos, values and innovative curriculum ensure that the children are at the heart of everything we do. We feel that Bowes is a very supportive, nurturing and inclusive school where children have a voice.*



**Effie Demetriou**  
Headteacher

The Bowes Motto ***Growing Hearts Growing Minds*** captures the essence of our value system which we believe supports our children to grow. Our motto is at the heart of all we do. We are committed to providing children with the tools they need to become successful learners and citizens of tomorrow.

We teach our children to be resilient and have strength of character in order to positively contribute to society. We empower our children to grow and develop their minds and opinions each day.

Please visit our website for more information  
[www.bowesprimaryschool.org](http://www.bowesprimaryschool.org)



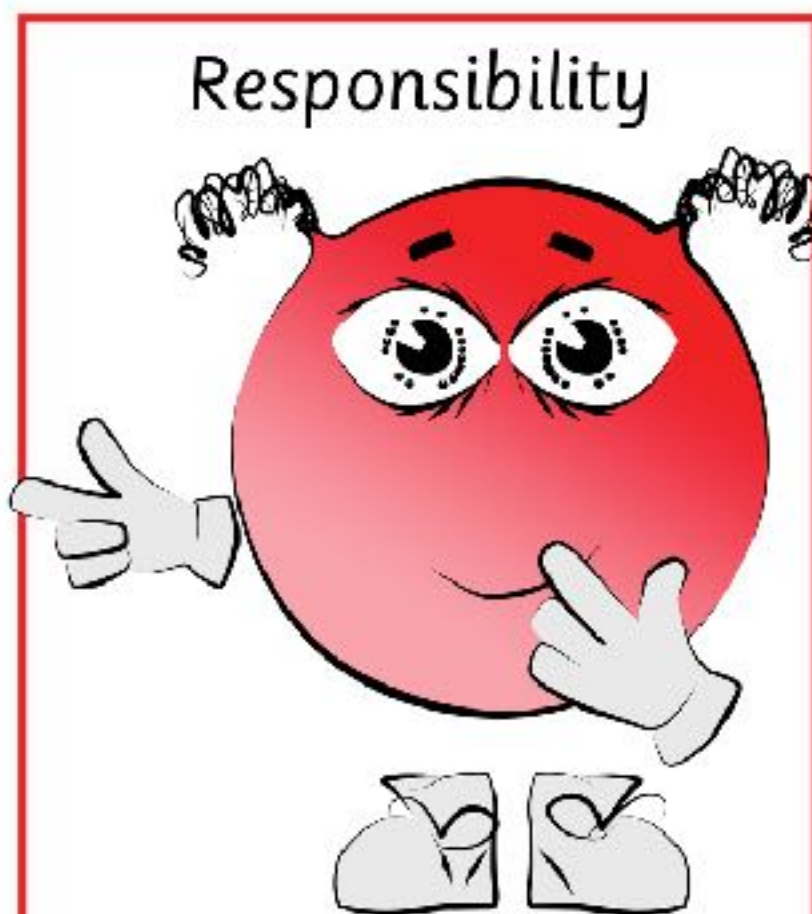
*“The quality of teaching is outstanding, because teachers have high expectations of pupils, and provide choice, independence and engagement in classroom activities.”*



# Values @Bowes Primary School

*Our curriculum extends beyond the academic as we support pupils' personal development, through our Bowes values of responsibility, respect and resilience, and the development of character, personal, social and health education, spiritual and cultural awareness, including developing an understanding and empathy for issues and events in the local, national and international community. We put a strong emphasis on pupil voice to encourage independent and engaged learners, promoted in lessons, the Bowes Parliament and the development of young leadership skills.*

Responsibility




**I am the responsible Bebowe.**  
I make the right choices and take responsibility for my own actions.

Respect



**We are the respectful Bebowes.**  
We show consideration to those around us and value ourselves and our community.

Resilience



**I am the resilient Bebowe.**  
I persevere and can bounce back even when there is a challenge.







# *Education in* Early Years Foundation Stage

*The Foundation Stage is inclusive of sessional Nursery and Reception. Every child deserves the best possible start in life and the support that enables them to fulfil their potential. Children develop quickly in the early years and together we aim to make the most of their abilities and talents as they grow up.*

Below are the four guiding principles that shape the practice in our Nursery and Reception classes:

- ★ Every child is a unique child, who is constantly learning and can be resilient, capable, confident and self-assured.
- ★ Children learn to be strong and independent through positive relationships.
- ★ Children learn and develop well in enabling environments, in which their experiences respond to their individual needs and there is a strong partnership between practitioners and parents and/or carers
- ★ Children develop and learn in different ways and at different rates



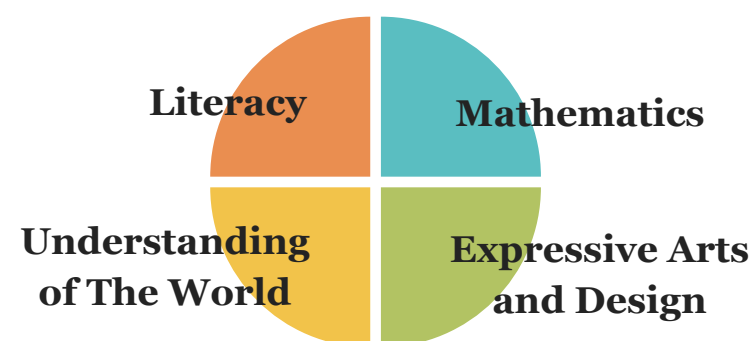
*“In the Early Years Foundation Stage, children learn quickly to recognise their letters and sounds (phonics) because of the teachers’ focus on play activities that are built around speaking, movement and interactive learning”*

**There are seven areas of learning and development in the early years.**

**Prime Areas** - igniting children's curiosity and enthusiasm for learning, and for building their capacity to learn, form relationships and thrive.



**Specific Areas** - through which the three prime areas are strengthened and applied. The specific areas are:





“My son thoroughly enjoys school and has developed massively in his learning since starting Nursery. The Bowes Learning Quest curriculum has really gripped his imagination. At home he is constantly talking about what he has been doing in school, singing songs, playing games and sharing what he has learnt.”

**Parent**





# Curriculum Intent statement

We aim to provide our pupils with an engaging and empowering curriculum that equips them for today and tomorrow, building on their natural curiosity and thirst for new experiences and knowledge. Our curriculum has been shaped around our main drivers - **VOICE - Values, Opportunity, Inclusion, Community and Environment**.

We view the curriculum as the totality of every planned/unplanned experience and interaction that pupils encounter within our school. It informs every aspect of our practice and culture from academic content to the personal development of characteristics and virtues.

Our curriculum aims to improve the life chances of all children by ensuring each child becomes:

- A **successful learner**, who enjoys learning, makes good progress and achieves well.
- A **confident individual**, able to live a safe, healthy and fulfilling life.
- A **responsible citizen**, able to make a positive contribution to society.

Our high academic ambition for all pupils is delivered through a broad and carefully planned and sequenced curriculum, ensuring new knowledge and skills build on what has been taught before and towards clearly defined end points.

In lessons and outside the class room, our broad and engaging curriculum is designed to ensure all pupils are aware of cultural capital - the *best* knowledge, skills and understandings that have been thought and said, across the world, to engender an appreciation of human creativity and achievement. We ensure all pupils have access to a wide range of cultural experiences, including "live" music and dance performances, visits to the theatre, museums and galleries, places of worship and the Houses of Parliament.

We have a strong focus on the performing and creative arts, public speaking and debating and provide specialist provision in Art, Design Technology and Music.



*"Positive relationships and vibrant classrooms and corridors contribute to a very stimulating atmosphere for learning across the whole school. Pictures of pupils working and enjoying activities are displayed around the school."*

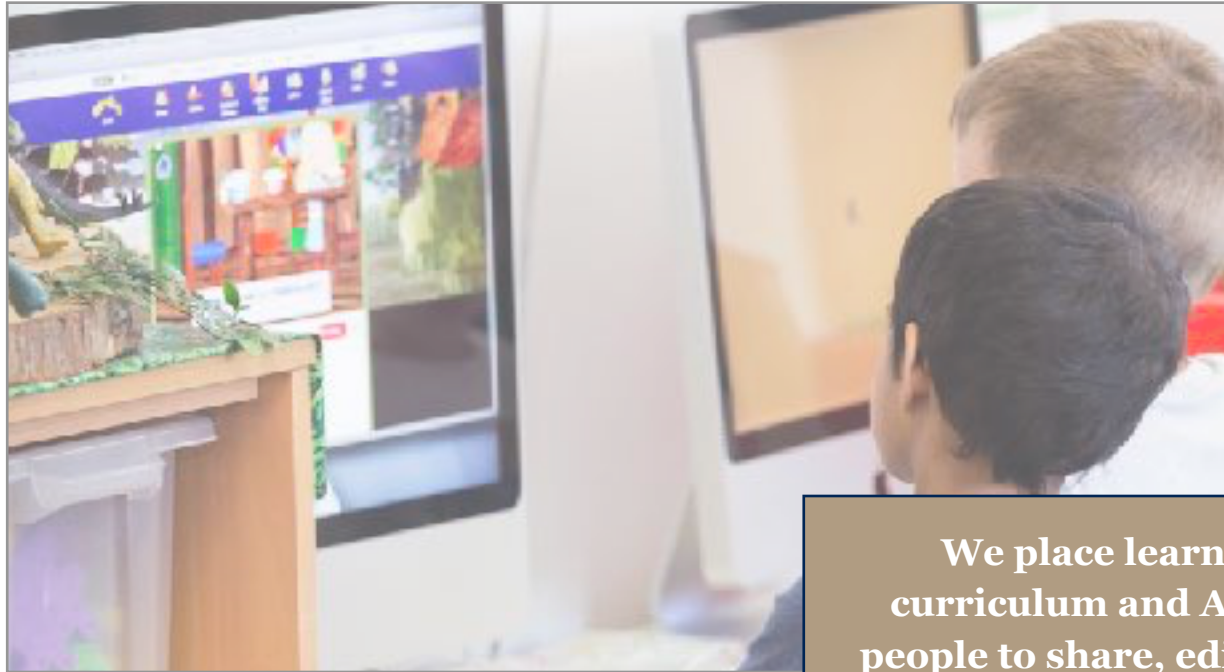




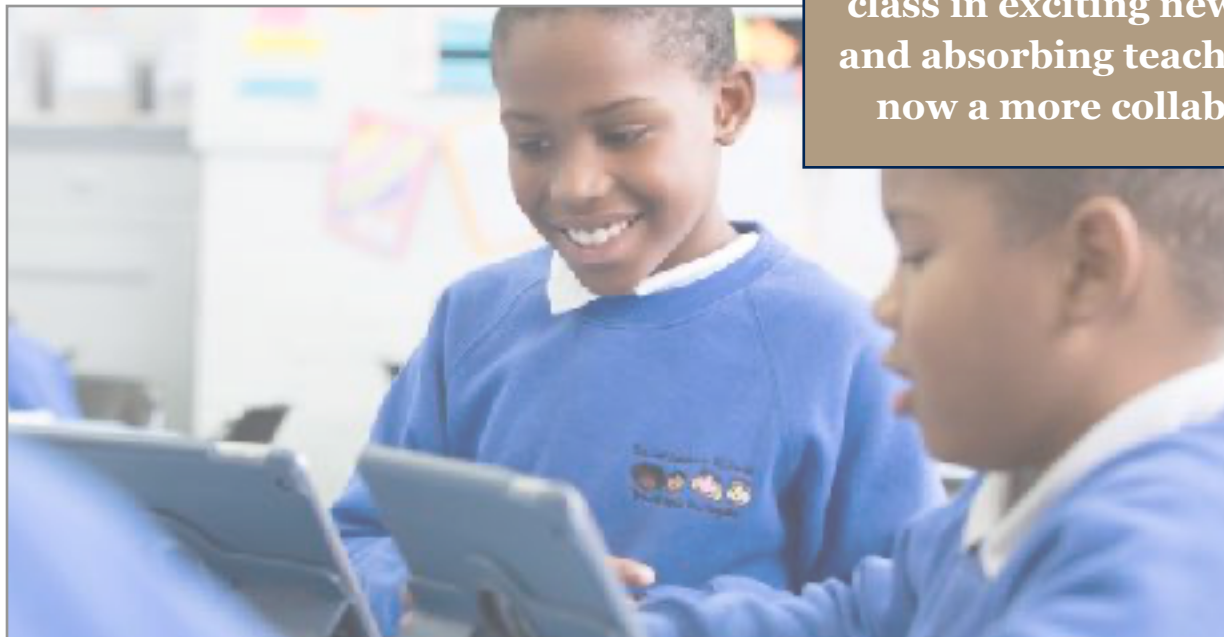


# Digital Learning @Bowes

*Bowes has embraced the potential of technology to transform our teaching and learning. The outcomes have been inspiring. We continually push the boundaries of digital learning to deliver an education that prepares young people for life in an ever-changing digital world. All children from Years 1 to 6 are equipped with their own Chromebook!*



**We place learners at the centre of our curriculum and Apple TVs allow our young people to share, edit and communicate during class in exciting new ways. So, instead of sitting and absorbing teacher-led material – learning is now a more collaborative, engaging process.**





# *Social* Platforms

*We are very proud to share our work via our fantastic social platforms. Please visit our innovative Instagram and Twitter pages to view some of our children's amazing work and our on-going news and events.*

[@bowesprimaryschool](#)



[@BowesSchool](#)









# Assessment Tapestry

*Tapestry is an Early Years Foundation Stage (EYFS) assessment tool developed at Bowes. It is now used across many schools.*

Tapestry allows educators to evidence, assess, track and log each pupil's progress and profile in accordance with the Department for Education's standard assessment criteria.

Evidence is collected via an iPod or iPad using the built-in camera and uploaded directly to pupils' online profiles. Parents can access their child's evidence online to follow their progress. Parents can comment on observations shared by their class teacher and also upload some of their own experiences with their child.

When pupils reach the end of the EYFS, all parents receive a digital 'book' with a record of what their child has been learning throughout the year. This is emailed directly to parents.

Parents receive a log-in from the school when their child enrolls and then log into their account using the following website on by downloading the app on any smartphone:

**<https://tapestryjournal.com>**



*Being able to simply log into my account and view what my child has learned throughout the day has been an amazing insight into their education at Bowes. It also gives me the opportunity to talk about what they have learned at school each day when we are at home - I love it!*

**Parent**





### **Extra - Curricular Activities at Bowes**

We offer a wide range of extra-curricular activities at Bowes. Most are run by our skilled members of staff and others by outside agencies. Some of these include:

- ★ Maths
- ★ Creative Writing
- ★ Ball Skills
- ★ Art
- ★ Choir
- ★ Steel Pans
- ★ Languages
- ★ Football



# *Enrichment* @Bowes

*@Bowes we pride ourselves on the rich and varied experiences we offer our children.*

Alongside musical opportunities (including individual and class music lessons; choir and various ensembles) we also recognise the importance of the visual and technological arts.

**Some of the fantastic enrichment opportunities that we offer include:**

- |                                  |                              |
|----------------------------------|------------------------------|
| ★ School Parliament              | ★ Theatre Workshops          |
| ★ School MPs                     | ★ Year 6 Work Experience     |
| ★ Public Speaking                | ★ Swimming                   |
| ★ Debating                       | ★ Sports Tournaments         |
| ★ Charity Events                 | ★ Extended residential trips |
| ★ Camping                        | ★ Mock Elections             |
| ★ Bring a Grown Up to School Day | ★ Curriculum Workshops       |









# *Beyond* the classroom...

*Educational visits are part of the school's provision. During the year, we take children out of the school on visits to enhance their learning and extend their experiences.*

The school will always inform parents if we are planning to organise any educational visit off site. Often we take our Year 5 pupils on a residential camping trip and our Year 6 pupils on a 'school journey' for a week.



We do not require permission when taking children out of school during school hours; however, for educational visits further afield or that extend past the normal school day, we will send you a form for you to return, requesting your permission.





# *Parliament* @Bowes

*We are very proud to have our very own School Parliament. This is an opportunity to hear the views of all pupils through a democratic process.*

Bowes is proud to have their very own school parliament. This is an opportunity to hear the views of all pupils through a democratic process. Both our Members of Parliament and Councillors are responsible for collecting the views and issues raised in their classes. A special 'Polling Day' takes place to vote for the councillors and MPs - children have to visit the school hall to vote on ballot papers and enter into a box.

## **Members of Parliament**

At Bowes we have Year 6 Members of Parliament (MPs) who work very closely with the Year 6 Councillors and Class Councillors. The MPs meet regularly with the Senior Leadership Team to share the views and opinions of all the children. We also link these views to the School Improvement Priorities.



## **School Council**

Our school council are a highly valued group of children who represent the voice and opinions of all the children within our school. The Council is made up of Year 6 children who each have a class to work with alongside a Class Councillor. Through our School Council we aim to develop young leadership skills, whilst supporting student democracy. Most importantly, our strong team of Councillors aim to promote the well-being of the children within our inclusive school.







# *Healthy Diet,* Happy Child



At Bowes Primary School we provide nutritious, healthy food, which we serve in an environment that promotes social interaction between children. We pride ourselves in the quality of our meals.

- ★ All children in Reception in KS1 receive free school meals every day.
- ★ In KS2, hot meals are available for children at a fixed cost.
- ★ We encourage children to bring a small bottle of water with their name written on it to school every day.
- ★ The school meals at Bowes are currently provided by The Pantry.
- ★ Parents paying for school meals will do so through their website.  
<https://www.thepantrycatering.co.uk>





# Health & Safety

*At Bowes, health and safety measures are aimed at all members of the school community, including visitors to the school, but most importantly, our pupils. We take the safety of our pupils and staff very seriously and have the highest standards. Full details can be found on our website in our health and safety policy.*

## First Aid

If your child hurts themselves in school, a member of staff will treat them accordingly. In some cases, the Welfare Officer or a first aider may deal with the incident. You will be informed if this is the case either by phone or a slip home with your child.

## Medication

All medicines need to be given to the Welfare Officer in person so that a child's medication can be discussed for its safe administration. The only medicines that can be administered in school are those prescribed by a doctor.



*“Parents and carers highly praise the school and are happy that the children are safe.”*



## Care Plans

If your child has a specific medical need, the Welfare Officer will create a care plan with you after the initial admission process.



# Uniform @Bowes

*The children proudly wear our uniform; details for different year groups are*

Reception - Year 5	Year 6	Active PE Uniform (worn only on PE days)
<p>Bowes blue sweatshirt or cardigan - with school logo</p> <p>Bowes polo shirt - white with school logo</p> <p>Black trousers or black skirt</p> <p>Black shoes or plain black trainers</p> <p>Blue and white checked dress (summer months) Black shorts (summer months)</p>	<p>Bowes (black) sweatshirt or cardigan - with school logo</p> <p>Bowes polo shirt - white with school logo</p> <p>Black trousers or black skirt</p> <p>Black shoes or plain black trainers</p> <p>Blue and white checked dress (summer months) Black shorts (summer months)</p>	<p>Bowes sweatshirt or cardigan</p> <p>Bowes white polo shirt</p> <p>Plain black tracksuit bottoms (no logos)</p> <p>Plain black shorts for indoor PE and outdoor PE in warmer weather</p> <p>Plain black trainers</p>
Shoes should be strong and flat heeled. In the summer, please provide your child with a hat which protects their face, head and the back of their neck from the sun.		

**Jewellery should not be worn apart from small stud earrings. Please ensure children refrain from wearing earrings on PE days.**

*Bowes sweatshirts, cardigans and polo shirts can be bought from Lyons School Shop on Hertford Road in Enfield or by visiting their website using the following links:*

<http://www.uniform4kids.com/Category/Bowes>

**U4K**  
www.  
uniform4kids.  
com



## **Lost property**

To avoid any items of clothing or equipment being lost, please always clearly label all items with your child's full name and class. All unnamed and unclaimed clothing will go to lost property. Items in lost property are available for collection at the end of each school day.



# *Times* of The School Day

*We operate a soft start system, which means that the school gates open at 8.45am and children walk straight into their classroom for registration at 8:55am. Parents collect their children from designated areas at the end of the day.*

## Reception

**Morning: 8:55am - 11:30am**  
**Afternoon: 12:30pm – 3:10pm**

## KS1

**Morning: 8:55am – 11:45am**  
**Afternoon: 12:45pm – 3:10pm**

## KS2

**Morning: 8:55am – 12:45pm**  
**Afternoon: 1:45pm – 3:20pm**





# WE ARE UNIQUE



Bonjour  
Hola  
Ciao  
Hallo  
Hello





# Admissions & Attendance

## Admissions

The school is committed to ensuring that children settle into their classes happily. During the summer term prior to starting school, parents receive information about their child's induction process. Other introductory meetings are also arranged to support the children in settling in successfully when they begin.

Children who start school in the middle of a year will have an introductory meeting with a member of staff prior to entry. Both parent and child need to attend these meetings. The school admission policy is in line with the London Borough of Enfield procedures. Admission criteria can be found in a booklet which is available on the Enfield council website.



## Attendance

At Bowes Primary School, we want all children to achieve their full potential. Good attendance ensures that your child will not be missing out on any crucial learning. If your child is absent for any reason, please phone the school in the morning on the first day of absence to let us know. In the case of sickness or diarrhea, your child must be kept off school for 48 hours once this has stopped. Our Attendance Officer will contact you if there are any concerns regarding absence.



*“Pupils attend school regularly and are punctual”.*





# *Bowes* Club

*The Bowes Club is run by Bowes Primary School and offers provision before and after school, through a breakfast and after school club. Both are open to all children attending the school. We aim to provide high quality, stimulating care in a safe and secure environment outside of school hours.*

## **Our Breakfast Club will offer children:**

- ★ A wide variety of fun and stimulating activities.
- ★ A healthy breakfast, such as cereal, toast, yoghurt and fruit.
- ★ Safe and stimulating provision between 8:00am - 8:55am.

## **Our After School Club will offer children:**

- ★ A wide variety of fun and stimulating activities, e.g. construction, puzzles, table-top games, creative activities, etc.
- ★ Access to outdoor play (weather and light permitting)
- ★ A healthy snack
- ★ Access to a quiet area for reading and relaxation
- ★ Support with homework if required
- ★ A chance to socialise with other children

**After School Club hours are 3:15pm - 5:30pm**

***For more information and a registration form please speak to the school office or visit our website.***







# Connect Education Trust

Bowes Primary School is an academy which is part of Connect Education Trust.

The Connect **vision** is to empower children to lead remarkable futures.

The Connect **mission** is to connect with our pupils and offer them an exceptional education. Recruiting inspirational and committed teachers, school leaders and people to empower each and every one of the children in our care.

*Androulla Nicou* CEO



**Hazelbury** Primary School

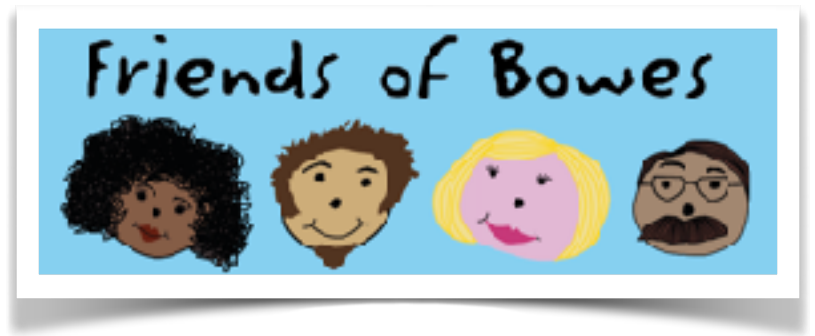


Bowes Primary School





# *Friends* of Bowes PTA



*The Friends of Bowes Parent Teacher Associations were set up to provide fundraising support for Bowes Primary School.*

Every parent and carer of a child attending the school is automatically a member of the Friends of Bowes, as are all the teaching and non-teaching staff at the school. If parents would like to get involved, no matter how small you think your contribution would be, the Friends of Bowes would love to hear from you. New faces and fresh ideas are always welcome!

No one is expected to contribute more time than they are able, to events or activities. Everyone is welcome at the meetings which are held approximately every half term on a weekday evening. It is a great way of getting to know other parents within the community and getting involved in helping your child's school.

Some of the events which have been organised in the past include:

- ★ The Summer Fair
- ★ Musical Bingo
- ★ Adult Quiz
- ★ Winter Sing Along
- ★ Easter Fair
- ★ Many Cake sales



*To find out more about the Friends of Bowes please visit the school website.*



friendsofbowes@gmail.com



# *Keeping* in touch...

## Enquiries

At Bowes Primary School we try our best to keep lines of communication open as much as possible. If you have any concerns or need to share information regarding your child, please make an appointment to see your child's class teacher at a time that is mutually convenient. Alternatively, if you are unsure who you need to speak to, ask a member of the office team and they will organise a meeting with the correct party. Copies of school policies are available on our website.

## Communication

We email all our parents regular newsletters as well as uploading them onto our website. We also send out letters relating to particular activities when appropriate. You may also be contacted with various reminders via text message and you can find up to date information about the school on our website. In addition, occasionally it may be necessary for us to call you, so please ensure that the contact details we hold for you are up to date.

## **Bowes Primary School**

Bowes Road  
New Southgate  
N11 2HL

Tel: 020 8368 2552

Email: [office@bowesprimary.org](mailto:office@bowesprimary.org)

