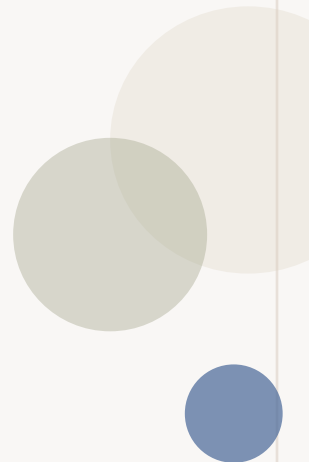
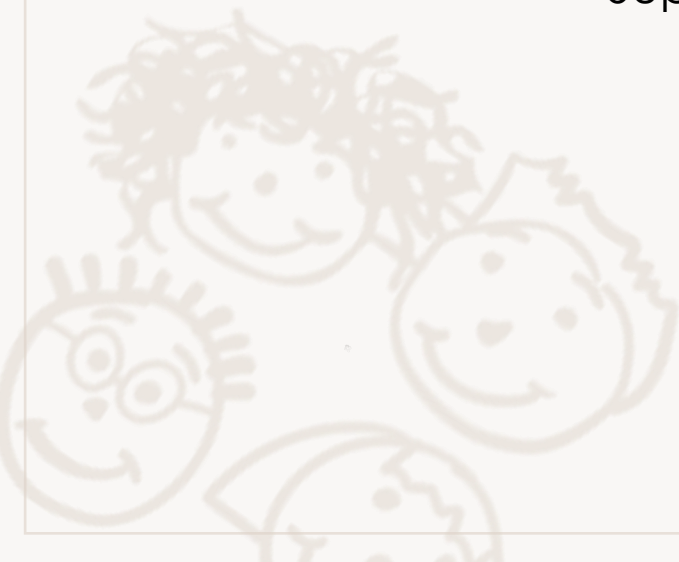




Mississippi Class

Class teachers: Carly and Mudje

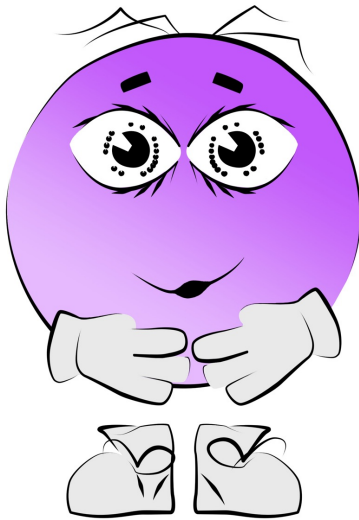
Support staff: Canel and Hava





Bowes Core Values

Resilience



I am the resilient Bebowe.

I persevere and can bounce back even when there is a challenge.

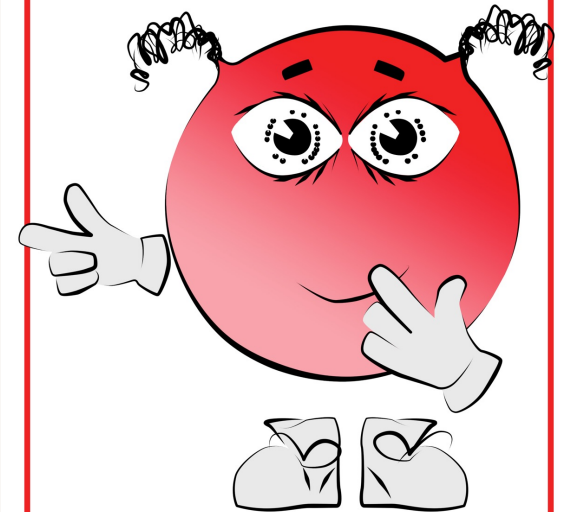
Respect



We are the respectful Bebowes.

We show consideration to those around us and value ourselves and our community.

Responsibility



I am the responsible Bebowe.

I make the right choices and take responsibility for my own actions.



Attendance and Punctuality

- Registration is at 8:50am
- Please ensure your child is in school in good time
- The gate/doors close at 8:50am
- School attendance is currently one of our priorities
- Please ensure all appointments are booked outside of school hours where possible
- Holidays during term time will strictly not be authorised
- Special requests should be directed to Effie, the Headteacher



School Uniform

- Bowes/blue sweatshirt or cardigan
- Bowes/plain white polo shirt
- Black/grey skirt or trousers
- **Black shoes or plain black trainers**
- Blue and white checked dress (summer months)
- Black/grey shorts (summer months)

Please remember to label all your child's clothes and belongings.



Active Uniform

Your child is required to wear their active uniform on:

Wednesdays

- Bowes/plain white polo shirt
- Plain black/grey shorts for indoor lessons
- Plain black/grey tracksuit bottoms (no logos)
- Black trainers

Please ensure your child does not wear jewellery to school and long hair is tied up.

Please remember to label all your child's clothes and belongings.

Curriculum



At Bowes we aim to provide a creative and balanced curriculum that meets the needs of all our children.

We want our children to be happy, confident, well rounded individuals with a love for learning. We aim to provide all children with a safe and stimulating environment that builds on each individual's needs and interests.

There are three characteristics of effective learning in Early Years:

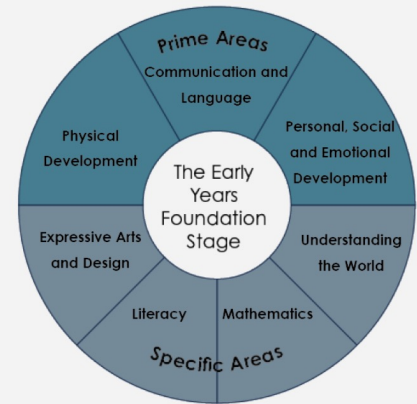
- Playing and Exploring: becoming independent learners.
- Active Learning: Investigating, learning from mistakes, persevering.
- Creating and Thinking critically: develop their own ideas and make links between ideas.



Curriculum

There are seven areas of learning:

- Personal, social and emotional development
- Communication and language
- Physical development
- Literacy
- Mathematics
- Understanding of the world
- Expressive arts and design



The Areas of Learning and Development

Our Learning Quest this term is 'Fantastic Me!'.

(Children will be bringing home a bag to fill 3/4 items, family photograph to share and talk about with their peers)

Please check the school website for updates on the curriculum.

Curriculum



Tapestry:

- Tapestry is our online learning platform. We use this to track children's learning and this also gives parents/family members an opportunity to see what their child has been learning at school. It allows parents/family members to comment and give us feedback about their child's learning.
- You should have received an email to activate your Tapestry account. If you haven't done so already please do this as soon as possible. If you have not received an email please let us know and we will resend you the link.
- You will receive individual photos of your child engaging in an activity as well as group and whole class activities. For safeguarding purposes please make sure viewing these photos are for your own personal use.

Home Learning



- Each child will have a home learning book. This will start for Reception children after half term.
- Home learning grids are sent to children each half term via Google Classroom@School and can be found on the Bowes Website in the Classes section.
- There will be additional learning materials that we will upload to google classroom. Also, we may give children phonics/reading activities at the end of each half term for your child to practice at home. This is to embed and consolidate the learning they have been doing in class.
- Reading: There will be a phonics/reading meeting to talk to you about how reading is carried out at Bowes. It is important you read with your child at every opportunity to create a love of books and reading from a very early age. Information about the meeting will follow.

Ways to help at home...



Encourage your child to:

- Encourage your child to carry out fine motor activities such as holding a pencil correctly, playing with play dough(rolling, pinching, twisting), developing their cutting skills and scissor skills
- Encourage your child to write and recognize their own name
- Eat on their own, using a knife and a fork
- Encourage your child to put their own coat on and zip it up
- Encourage your child to wipe themselves properly when they visit the toilet. We know this takes practise!
- It is very important to support your child's learning by practicing their phonics (sounds), writing, numbers and reading at every opportunity
- Encourage your child to hold a pencil correctly – there will be a link on google classroom to help!
- We enjoy receiving photos and updates of your child's learning at home. Please feel free to upload any evidence of this on to your child's Tapestry learning journey. Also, when staff add photo's, videos and comments we would love for you to comment on these too.

Additional Information



Please keep us informed of any allergies/medication.

If your child is going to miss school due to an appointment or illness, please make sure you inform the office as soon as possible.

If your child's collection arrangements are different for any reason, please let the office know before the end of that day.

Check the [school website](#) and our Social Media platforms for updates and photographs from events.

If you change your contact details, please inform the office

Our Socials!

BOWES
PRIMARY SCHOOL

