

# CONNECT

EDUCATION TRUST



# Our Schools

**BOWES**  
PRIMARY SCHOOL



Hazelbury Primary School



Delta Primary  
School



EVERSLEY PRIMARY SCHOOL



GROWING TOGETHER



Grange Park  
Primary School

**CONNECT**  
EDUCATION TRUST





# CLIMATE ACTION PLAN

At Connect Education Trust, we believe that small actions can lead to big changes, and we're excited to take steps toward a greener, more sustainable future. Our Climate Action Plan is all about creating a positive impact on the environment while inspiring our pupils, staff, and families to work together for a cleaner, healthier world.

From reducing waste to saving energy, we are committed to making eco-friendly choices that will benefit not only our school but the community around us. By embracing these efforts, we hope to encourage everyone at Connect Education Trust to become climate champions and help build a brighter, more sustainable tomorrow.

## SUMMARY

In progress: 10 items





# DECARBONISATION

## INSTALL LED LIGHTING

LED lighting is a cost-effective and energy-efficient alternative to traditional incandescent and fluorescent bulbs. By switching to LED lighting, schools can significantly reduce electricity consumption and maintenance costs while lowering their carbon footprint. LED bulbs also generate less heat, improving classroom comfort and reducing the need for air conditioning.

1. Undertake audit of the current situation.
2. As schools are refurbished, consider replacing lights for LED lights on a rolling program.
3. Train staff to use the new lights and replace when necessary.

*Started: 30th Sep 2025*

**IN PROGRESS**





# DECARBONISATION

## INSTALL MOTION SENSORS TO LIGHTS

Motion sensors automatically turn lights on and off depending on occupancy. By installing these in classrooms, hallways, and restrooms, schools can significantly cut down on wasted electricity. This ensures that lights are only used when needed, reducing overall energy consumption.

1. Research most appropriate motion sensors for areas of your school (classrooms/ corridors).
2. Hire contractors to install the motion sensors as areas are referbished.
3. Set lag times for sensors – 15 minutes for classrooms, 5 minutes or less for corridors or toilets.
4. Train staff to use and maintain the sensors.

*Started: 30th Sep 2025*

**IN PROGRESS**



# ADAPTATION & RESILIENCE

## PLANT TREES TO CREATE SHADED AREAS

Planting trees strategically around the school ground provides natural cooling, reducing the need for artificial cooling systems during hot months. Trees also improve air quality by filtering pollutants, enhance biodiversity by providing habitats for birds and insects, and create inviting outdoor learning spaces. As they grow, trees contribute to carbon sequestration, offsetting a portion of the school's emissions while simultaneously improving pupil wellbeing.

1. Select an area of school ground suitable for tree planting.
2. Research and select suitable trees for the area.
3. Plant more trees on school grounds.
4. Educate staff and pupils on their maintenance

*Started: 30th Sep 2025*

**IN PROGRESS**



# ADAPTATION & RESILIENCE

## SET UP A PUPIL PARLIAMENT SUSTAINABILITY COMMITTEE

Establishing a Pupil Parliament Sustainability Committee ensures ongoing adaptation to environmental challenges. This team, composed of pupils and staff can assess risks, implement sustainability policies, and coordinate resilience projects. Regular meetings will help track progress and adjust strategies as needed.

1. Pupil Parliament will meet termly.
2. Arrange an annual Eco Trip.

*Started: 30th Sep 2025*

**IN PROGRESS**





# BIODIVERSITY

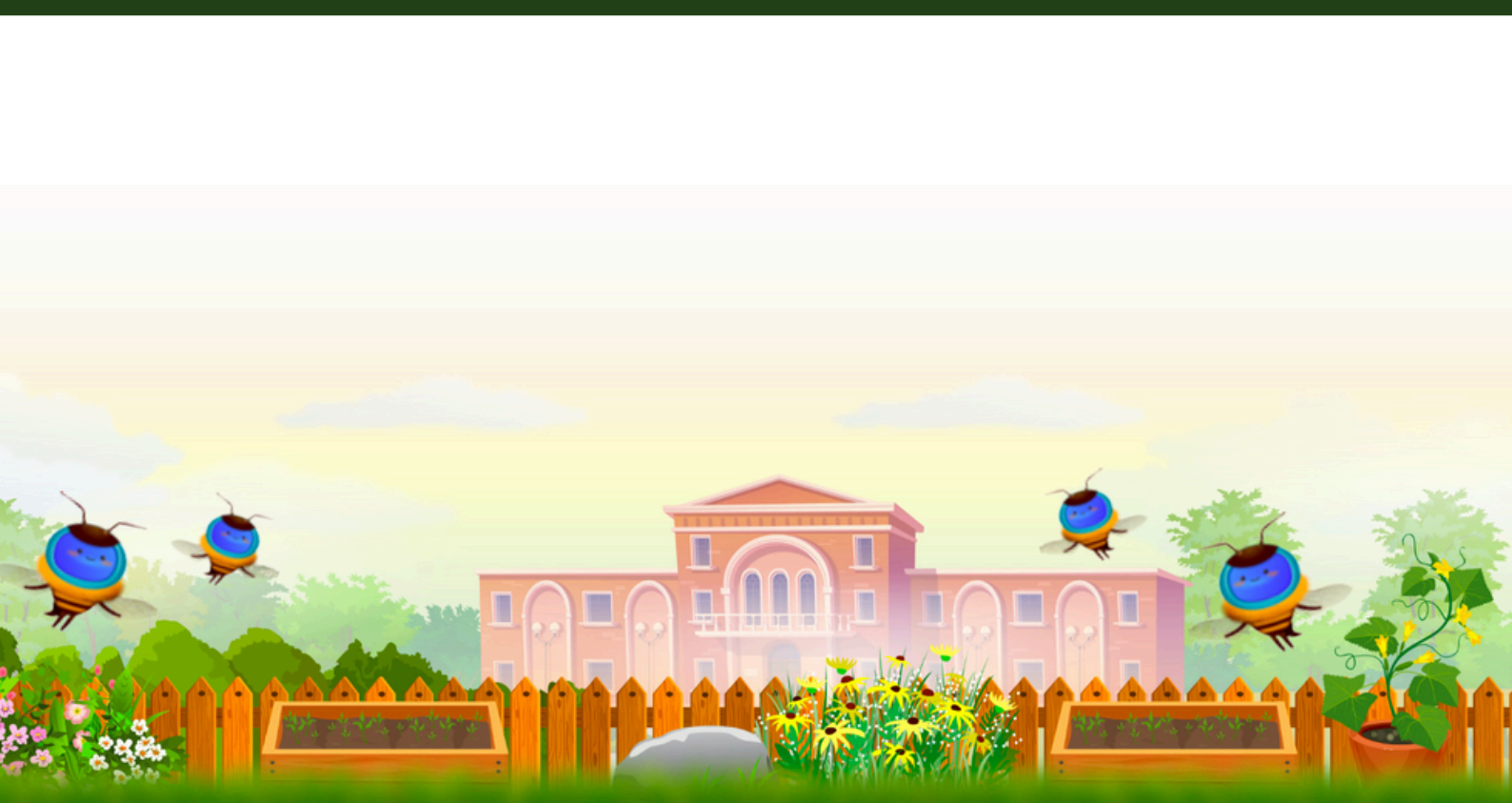
## SIGN YOUR SCHOOL UP TO EDUCATION NATURE PARK

Schools can participate in local or national education nature park programs to connect pupils with nature-based learning experiences. These programs provide hands-on engagement with biodiversity, conservation, and sustainability. By participating, pupils gain a deeper appreciation of the environment, and schools can access valuable teaching resources and support for outdoor learning initiatives.

1. Sign up to Education Nature Park for more resources.
2. Share resources through the operational update.

*Started: 30th Sep 2025*

**IN PROGRESS**





# BIODIVERSITY

## START A SCHOOL GARDENER

A gardening club provides pupils with hands-on experience in growing flowers, vegetables, and trees, while also teaching them about sustainability, soil health, and biodiversity. Gardening improves mental well-being, fosters teamwork, and enhances outdoor learning opportunities. Schools can use gardens to produce food, beautify the environment, and engage pupils in long-term eco-friendly initiatives.

1. Locate an area to garden.
2. Consider running gardening clubs
3. Advertise amongst pupils.
4. Grow plants and get pupils involved in maintenance/ harvest.

*Started: 30th Sep 2025*

**IN PROGRESS**





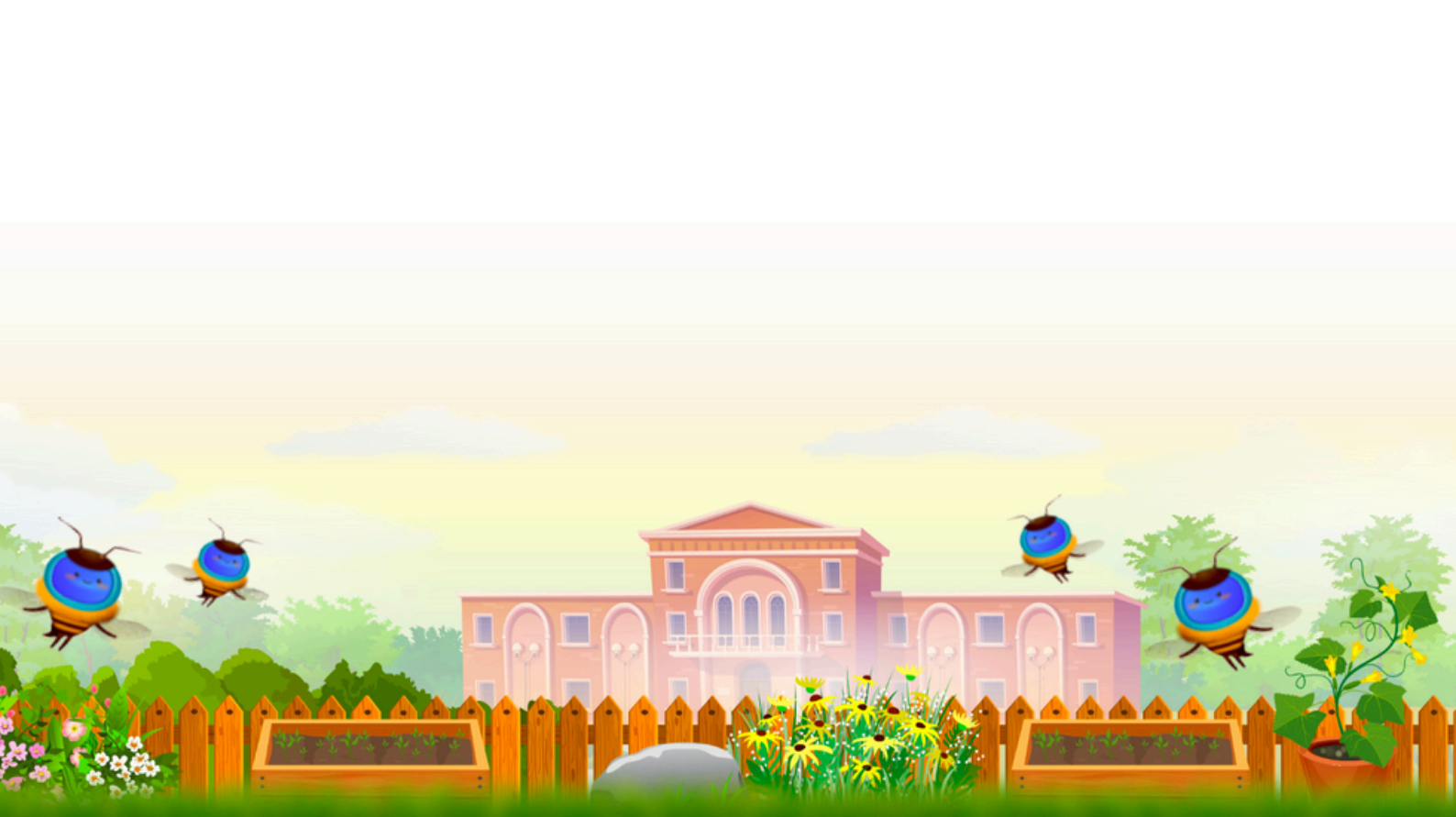
# BIODIVERSITY

## WORK WITH THE PUPILS TO GET THEIR VIEWS ON HOW THE SCHOOL SITE SHOULD LOOK

Schools can involve pupils in decision-making about their learning environment, ensuring that sustainability considerations are incorporated. Whether through workshops, surveys, or school councils, pupil input can lead to more effective green space planning, improved outdoor learning areas, and projects that align with their needs and interests. Involving pupils also increases their sense of ownership and responsibility for the school environment.

*Started: 30th Sep 2025*

**IN PROGRESS**





# CLIMATE EDUCATION & GREEN SKILLS

## LAUNCH A CARBON FOOTPRINT AWARENESS CAMPAIGN

Schools can run campaigns to educate pupils and staff about their carbon footprints and practical ways to reduce them. Through posters, workshops, and hands-on activities, pupils can learn how their transportation choices, food consumption, and energy use contribute to emissions. This knowledge can lead to long-term changes in behaviour that support sustainability goals.

1. Empower pupils to come up with their own climate change initiative through the pupil parliament.
2. Work with pupils to develop project proposals and plans using available resources.
3. Conduct project.
4. Recognise and celebrate pupils achievements.

*Started: 30th Sep 2025*

**IN PROGRESS**





# CLIMATE EDUCATION & GREEN SKILLS

## ORGANISE A WALK TO SCHOOL WEEK

Encouraging pupils and staff to walk, bike, or use public transport instead of driving can reduce emissions and improve local air quality. A Walk to School Week helps raise awareness about the environmental and health benefits of active travel.

*Started: 30th Sep 2025*

**IN PROGRESS**

