



# LATEST NEWS

19TH JANUARY 2026

## REMINDERS

### Class Assemblies

Friday 23<sup>rd</sup> January, 9:10am Mara Class - Year 5

Friday 6<sup>th</sup> February, 9:10am Snowdonia Class - Year 5

Friday 13<sup>th</sup> February, 9:10am Sahara Class - Year 1



### INSET

Monday 26<sup>th</sup> January - School Closed



## HAPPY NEW YEAR!

We would like to wish all our families and staff a very happy new year!

We are looking forward to another exciting year at Bowes.

THANK YOU!

Thank you all so much for the kind cards and gifts you shared with us at the end of last term - we really do appreciate them.

## PARENT INFORMATION MEETINGS



### Year 4 and Year 6 Parents

We would like to invite you to our upcoming information meetings which will be held in the Lower Hall on the following dates:

#### Year 4: Multiplication Tables Check (MTC)

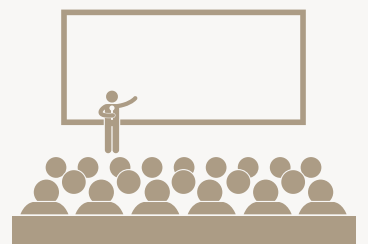
Date: Wednesday 28th January Time: 9am

Please see the [Year 4 MTC Parent Letter](#) for more details.

#### Year 6: SATs Information

Date: Wednesday 11<sup>th</sup> February Time: 9am

Please see the [Year 6 SATs Parent Letter](#) for more details.



# LEARNING QUESTS



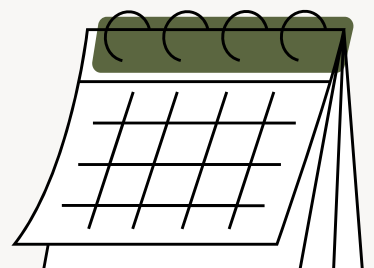
Please find below a list of all the class learning quests for this half term. Information about each of the quests can be found on the School website in the [Classes](#) section.



<b>Little Acorns (Nurs)</b>	Adventures at Sea!	<b>Olympic Class (Y3)</b>	Rolling on a River
<b>Mississippi Class (Rec)</b>	Not All Superheroes Wear Capes!	<b>Everest Class (Y4)</b>	Victorious Vikings
<b>Thames Class (Rec)</b>	Not All Superheroes Wear Capes!	<b>Fuji Class (Y4)</b>	Viking Voyages
<b>Kalahari Class (Y1)</b>	Crowns, Castles, and Coronation!	<b>Mara Class (Y5)</b>	Mountain Explorers
<b>Sahara Class (Y1)</b>	Once Upon a Time in a Palace	<b>Snowdonia Class (Y5)</b>	Snowdonian Explorers
<b>Pacaya Class (Y2)</b>	Heroic Hands	<b>Yellowstone Class (Y5)</b>	Ice Age
<b>Vesuvius Class (Y2)</b>	Fighting for Survival	<b>Angel Class (Y6)</b>	Sandbags and Sirens
<b>Amazon Class (Y3)</b>	River Dance	<b>Victoria Class (Y6)</b>	Keep Calm and Carry On

## TERM DATES 2026-2027

We have set our Term Dates for the 2026-2027 academic year. These can be viewed at the end of the Newsletter and on the [Bowes Website](#),



# KEEPING CHILDREN SAFE



## Advice for young people feeling down and unable to cope

Young Minds, a UK charity fighting for children and young people's mental health, has a page dedicated to advice for young people when they are struggling to cope. It covers a wide range of reasons why a young person might be feeling down or in need of support, as well as links to support services and tips to feel better.



[A guide for young people - Feeling down and unable to cope](#)

[A guide for parents and carers - Depression and low mood](#)

*Safeguarding is everyone's responsibility*



## DIARY DATES 2026

<b>23<sup>rd</sup> Jan 2026</b>	Mara Class Assembly, 9:10am
<b>26<sup>th</sup> Jan 2026</b>	INSET - SCHOOL CLOSED
<b>28<sup>th</sup> Jan 2026</b>	Year 4 MTC Meeting, 9am
<b>6<sup>th</sup> Feb 2026</b>	Snowdonia Class Assembly, 9:10am
<b>11<sup>th</sup> Feb 2026</b>	Year 6 SATs Meeting, 9am
<b>13<sup>th</sup> Feb 2026</b>	Sahara Class Assembly, 9:10am
<b>16<sup>th</sup> - 20<sup>th</sup> Feb</b>	Half Term
<b>23<sup>rd</sup> Feb 2026</b>	School Starts
<b>27<sup>th</sup> Mar 2026</b>	School Ends
<b>13<sup>th</sup> Apr 2026</b>	School Starts
<b>1<sup>st</sup> May 2026</b>	INSET - SCHOOL CLOSED
<b>4<sup>th</sup> May 2026</b>	BANK HOLIDAY - SCHOOL CLOSED
<b>25<sup>th</sup> - 29<sup>th</sup> May</b>	Half Term
<b>1<sup>st</sup> Jun 2026</b>	INSET - SCHOOL CLOSED
<b>2<sup>nd</sup> Jun 2026</b>	School Starts
<b>17<sup>th</sup> Jul 2026</b>	School Ends
<b>20<sup>th</sup> Jul 2026</b>	INSET - SCHOOL CLOSED
<b>2<sup>nd</sup> Sep 2026</b>	INSET - SCHOOL CLOSED
<b>3<sup>rd</sup> Sep 2026</b>	School Starts



FRIENDS OF  
**BOWES**



**Please continue reading for the latest news from our Friends of Bowes PTA.**



# Friends of Bowes AGM

## Tuesday 27 January @ 7pm

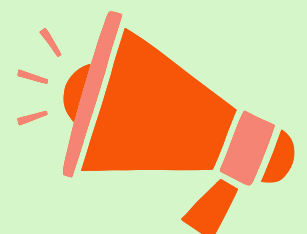
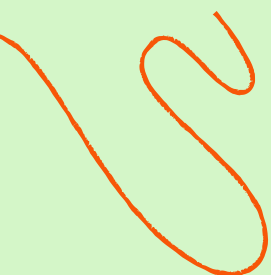
The purpose of the meeting is to:

- Elect new committee members
- Report on last year's events and financial status
- Share plans for the year ahead

Join us in person or online!

Able to attend?

To help us prepare for the AGM, please complete the  [google form](#) to let us know if you can attend and/or if you are interested in a committee role:



# How can I get involved?

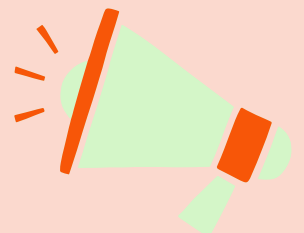
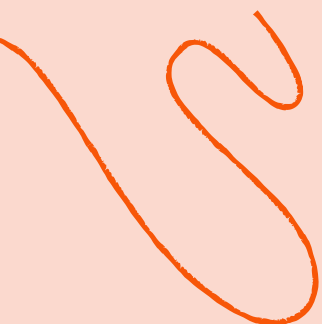
Love our community? Join our committee!

The committee is the charity's governing body, and essential to enable us to continue FoB's incredible fundraising work both in 2026 and beyond.

Several of the current committee will be leaving the school in July 2026. We therefore need the next generation to join the committee, so that you can be supported with a full handover before the end of this academic year, to enable you to take FoB forward and continue with its success.

If you are keen to find out more we would be very happy to talk to you about the various roles available on the committee and the rewarding work involved. Please feel free to email us at [friendsofbowes@gmail.com](mailto:friendsofbowes@gmail.com) or contact your class rep for more information.

Read on to see why joining the committee is a brilliant and fulfilling experience, along with a summary of the committee roles.



# Why get involved?



**Y6 parent and long-time committee member Jane de Lozey shares her thoughts...**

"When I first got involved with FoB I did so because I wanted to support the charity's fundraising at the annual summer and winter fairs, and to share the load with the hardworking members of the committee.

I thought it would also make me feel more connected to the school community and give me better insights into the running of the school, which it did. What I hadn't expected was the wonderful friendships I have made in the process, including getting to know the staff at school.

Some people are put off committees, thinking of with them as too close to their day jobs or requiring more time than they have. As a parent/carer of a Bowes student you are already a member of the Friends of Bowes community, but if you only ever stay on the periphery of school life you may miss out in so many ways. Here's why you might want to get more involved.

As a volunteer, you can decide how much time you can give - every contribution makes a difference - it's never dull. There's so much variety in terms of the events that FoB cover and the people who lend their skills throughout the year. You don't need previous experience of working for a charity or in education - just a willingness to get involved and work with others.

Volunteering shows your child how much you care about their education. I hadn't appreciated how proud it makes our children to see us working alongside their teachers and other parents/careers. By volunteering you demonstrate the value of contributing to the community.

You can help shape the program of events and have a say in how funds are distributed. It's a great way to understand what's happening behind the scenes.

You can share your talents and develop new transferable skills - opportunities include leadership, event planning, budgeting and communication. There's a role for everyone.



There are many reasons to get involved - from learning new skills doing things you've never done before to making great friends, working alongside kind people in the local community.

**The best reason is that your child will be proud of you, and you will deserve all that credit. Come and join us!"**

# Join Our Team



## CHAIR (SUPPORTED BY VICE CHAIR)

RESPONSIBLE FOR ENSURING THE FULFILMENT OF THE FRIENDS OF BOWES AIMS AND OBJECTIVES.



## SECRETARY

RESPONSIBLE FOR ENSURING CONSTITUTIONAL AND LEGISLATIVE COMPLIANCE FOR ALL FRIENDS OF BOWES ACTIVITIES.



## TREASURER (SUPPORTED BY VICE TREASURER)

RESPONSIBLE FOR MANAGING ALL ASPECTS OF FRIENDS OF BOWES INCOME & EXPENDITURE AND FINANCIAL REPORTING.



## EVENTS MANAGER

RESPONSIBLE FOR PLANNING AND CO-ORDINATION OF ALL FRIENDS OF BOWES EVENTS.




# Join Our Team



## DESIGN & PROMOTION - COMMUNICATIONS LEAD

RESPONSIBLE FOR THE  
FRIENDS OF BOWES  
NEWSLETTER & AD-HOC  
COMMUNICATIONS (E.G.  
DIGITAL BROCHURE).



## DESIGN & PROMOTION - SOCIAL MEDIA LEAD

RESPONSIBLE FOR OUR  
ONLINE  
PLATFORMS (FACEBOOK &  
INSTAGRAM) AND  
KEEPING THEM CURRENT.



## DESIGN & PROMOTION - EVENTS LEAD

RESPONSIBLE FOR  
CREATING  
ALL EVENT POSTERS /  
PUBLICITY AND  
SUPPORTING  
SIGNAGE.



## SPONSORSHIP LEAD

RESPONSIBLE FOR  
SECURING  
SPONSORSHIP &  
PRIZES FROM LOCAL  
BUSINESSES FOR  
EVENTS AND  
ACTIVITIES.



# Friends of Bowes Governance



- The committee is the charity's governing body, comprised of members of the association, which is elected at an AGM and shall hold office until the next AGM.
- All members of the committee are the legal trustees of the charity and have the collective and equal control of the association, its property and funds, and must be registered with the Charity Commission.
- In the case of the role being filled as a "Co" or "Joint" role, both individuals are equally responsible for fulfilling the role.
- At least one member of every sub-committee must be a committee member.



## Academic Year 2026-2027

<b>Autumn Term 2026</b>	
<b>Inset Day</b>	Wednesday 2 <sup>nd</sup> September 2026
<b>First Day of Term</b>	Thursday 3 <sup>rd</sup> September 2026
<b>Half Term</b>	Monday 26 <sup>th</sup> October to Friday 30 <sup>th</sup> October 2026
<b>Inset Day</b>	Monday 23 <sup>rd</sup> November 2026
<b>Last Day of Term</b>	Friday 18 <sup>th</sup> December 2026
<b>Spring Term 2027</b>	
<b>First Day of Term</b>	Monday 4 <sup>th</sup> January 2027
<b>Inset Day</b>	Friday 29 <sup>th</sup> January 2027
<b>Half Term</b>	Monday 15 <sup>th</sup> to Friday 19 <sup>th</sup> February 2027
<b>Last Day of Term</b>	Thursday 25 <sup>th</sup> March 2027
<b>Summer Term 2027</b>	
<b>First Day of Term</b>	Monday 12 <sup>th</sup> April 2027
<b>Inset Day</b>	Friday 30 <sup>th</sup> April 2027
<b>Bank Holiday</b>	Monday 3 <sup>rd</sup> May 2027
<b>Half Term</b>	Monday 31 <sup>st</sup> May to Friday 4 <sup>th</sup> June 2027
<b>Inset Day</b>	Monday 28 <sup>th</sup> June 2027
<b>Last Day of Term</b>	Thursday 22 <sup>nd</sup> July 2027

### **Bank Holidays**

- Friday 25<sup>th</sup> December 2026
- Monday 28<sup>th</sup> December 2026
- Friday 1<sup>st</sup> January 2027
- Good Friday 26<sup>th</sup> March 2027
- Easter Monday 29<sup>th</sup> March 2027
- Monday 3<sup>rd</sup> May 2027
- Monday 31<sup>st</sup> May 2027
- Monday 30<sup>th</sup> August 2027

### **INSET Days\***

- Wednesday 2<sup>nd</sup> September 2026
- Monday 23<sup>rd</sup> November 2026
- Friday 29<sup>th</sup> January 2027
- Friday 30<sup>th</sup> April 2027
- Monday 28<sup>th</sup> June 2027

**\* INSET dates are subject to change throughout the year.**